

Please read *Guidelines for Grading Theory Tests*. Accept answers in any octave within the given clef.

1. Major Key Signatures (both clefs required) 6

B A<sup>b</sup> G<sup>b</sup> C<sup>♯</sup> E B<sup>b</sup>

2. Minor Key Signatures 5

c<sup>♯</sup> minor, e<sup>b</sup> minor, f<sup>♯</sup> minor, g minor, g<sup>♯</sup> minor

3. Circle of Fifths 3

- a. (D Major)
- b. A<sup>b</sup> Major
- c. g minor
- d. f<sup>♯</sup> minor

4. Scales - Writing 3

F<sup>♯</sup> Major

b minor, natural form

f minor, harmonic form

5. Scales - Adding Accidentals 3

b<sup>b</sup> minor, melodic form (descending scale must have all accidentals)

Whole Tone

Chromatic

6. Modes 2

- a. Mixolydian
- b. Ionian

7. Intervals - Writing 5

m3 up A7 up P5 down m6 down d8 up

8. Triads - Naming\* (Do not deduct points if student adds incorrect figured bass.) 5

A<sup>b</sup> Augmented, B Major, b<sup>b</sup> minor, d diminished, C Augmented

9. Figured Bass 5

6 5 6 4 6  
3 3 4 2 5

10. Seventh Chords - Adding Accidentals 4

E<sup>b</sup> Dom 6 c<sup>♯</sup> dim 7 e dim 4 G<sup>b</sup> Dom 6

11. Dominant Seventh Chords - Keys 4

E<sup>b</sup> Major, F<sup>♯</sup> Major, b<sup>b</sup> minor, b minor

12. Writing Chords from Scale Degree Names 4

Tonic Leading Tone Subdominant Mediant

13. Chord Progression 1

\_\_\_ i iv ii V7 i  
\_\_\_ I IV ii<sup>o6</sup> V7 vi  
✓ i iv ii<sup>o6</sup> V7 VI

14. Chord Progression Questions 3

- a. c minor
- b. diminished
- c. deceptive

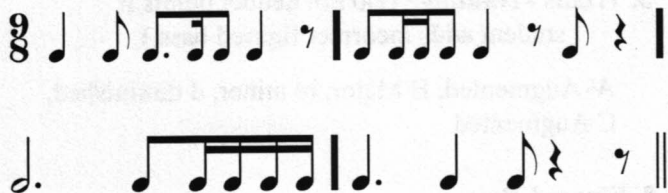
15. Transposition 1

\* When students are asked to write out "Major" or "minor," do not deduct points if they write "M" or "m" legibly, or use abbreviations "Maj.," "maj.," "Min.," or "min."

16. **Enharmonics** (Accept any correct enharmonic note) 2



17. **Rhythm - Adding Bar Lines** 3



18. **History** 8

- |   |   |
|---|---|
| a. Romantic                             | e. Classical                            |
| b. 20th/21st Cenuries<br>(Contemporary) | f. 20th/21st Cenuries<br>(Contemporary) |
| c. Classical                            | g. Romantic                             |
| d. Baroque                              | h. Baroque                              |

19. **Terms** 14

n, c, l, i, g, a, j, p, k, f, b, o, e, d

**Musical Analysis: J.C. Bach** 14

20. B $\flat$  Major

21.  $\frac{2}{4}$

22. *appoggiatura*

23. (Do not delete points if student adds incorrect figured bass)

- a. B $\flat$  Major
- b. g minor
- c. c minor

24. X. F  $\frac{4}{2}$

Y. D7

Z. G  $\frac{4}{2}$

**J.C. Bach, cont.**

25. Recapitulation

- 26. 1. P8
- 2. A4
- 3. m2
- 4. M6

**Musical Analysis: Dussek** 12

27. fast and cheerful, almost very fast

28. 4 beats

29. (Lines are required on Roman numerals for Major and Dominant 7th chords)

a. vii $^{\circ}$   $\frac{6}{3}$

b. ii  $\frac{5}{3}$

c.  $\text{IV}$   $\frac{6}{4}$

d. V  $\frac{6}{5}$

e. vi  $\frac{5}{3}$

30. 1. F Major  $\frac{6}{3}$

2. d minor  $\frac{6}{3}$

31. 3. G $\frac{6}{5}$

32. No

33. Classical